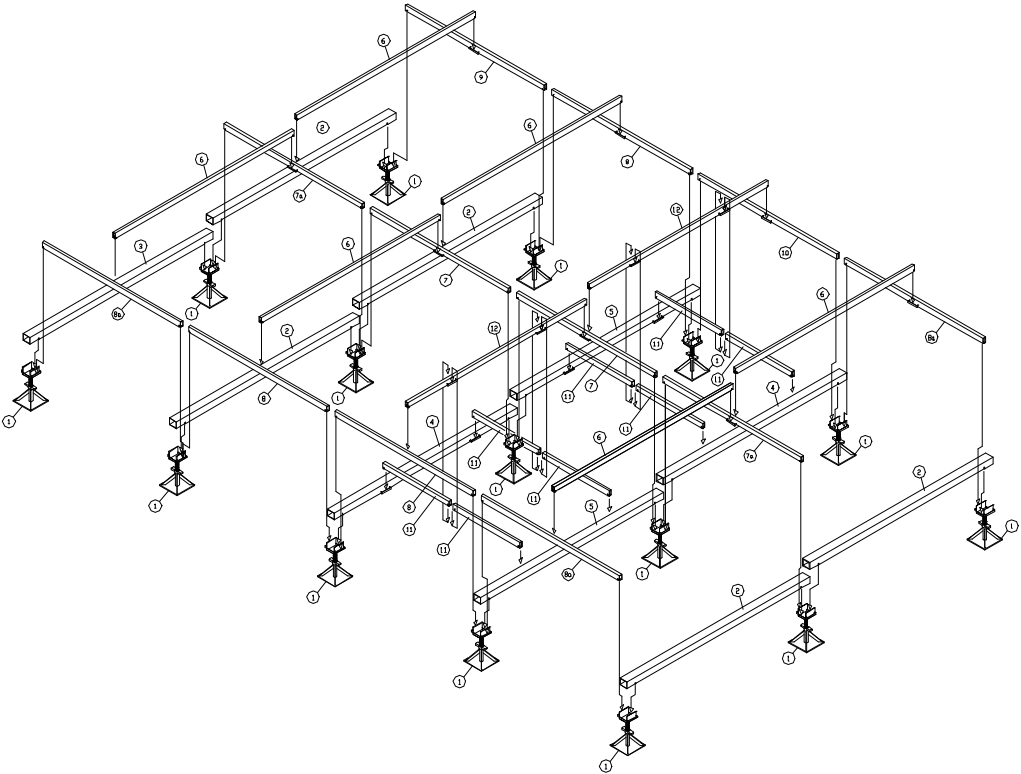
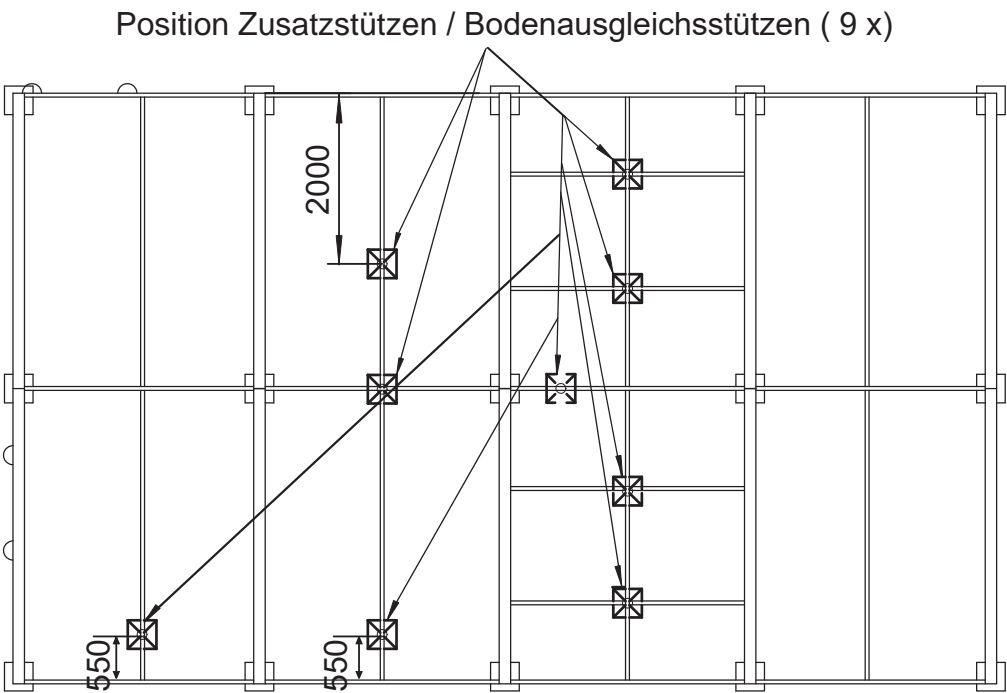
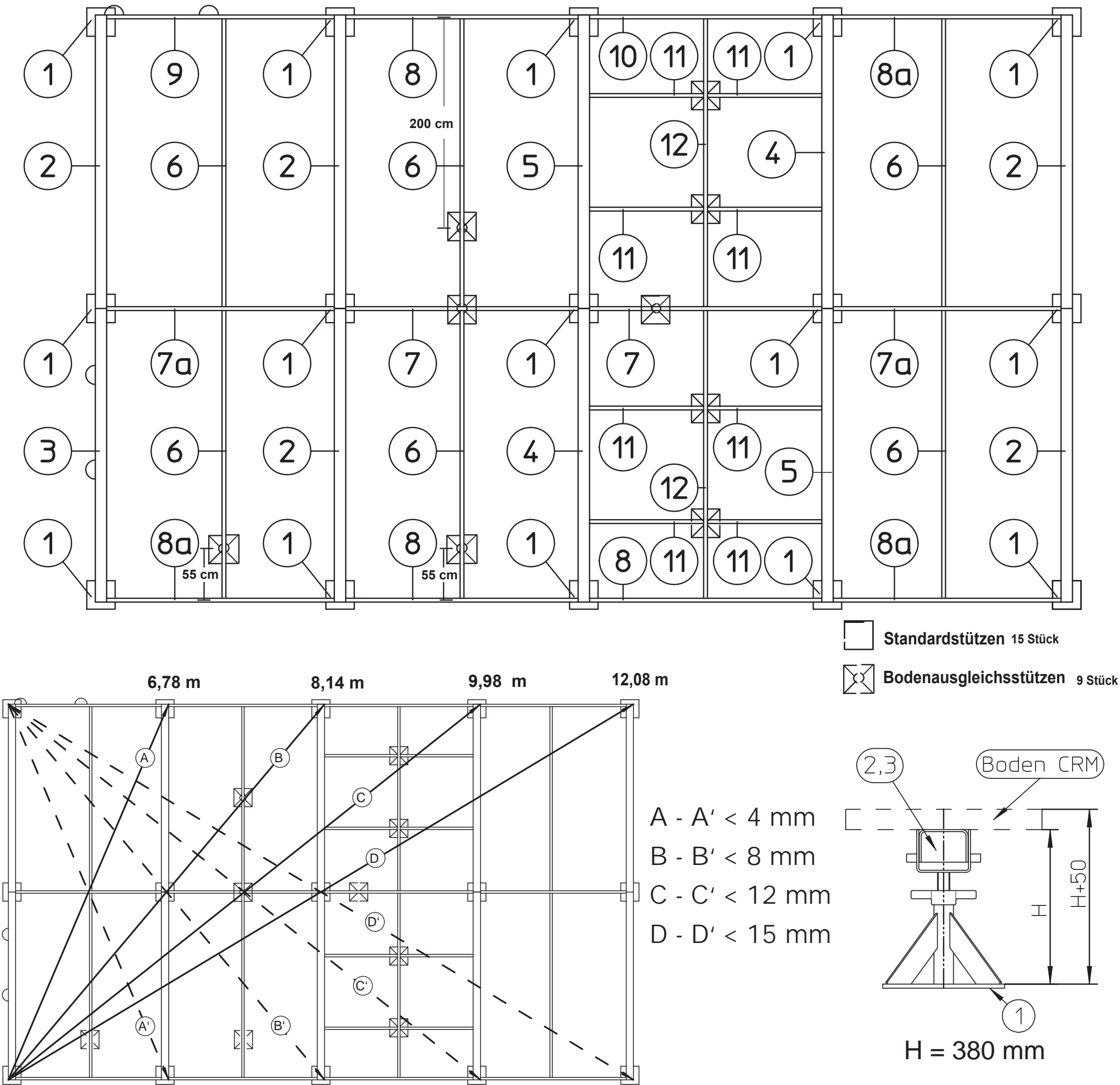
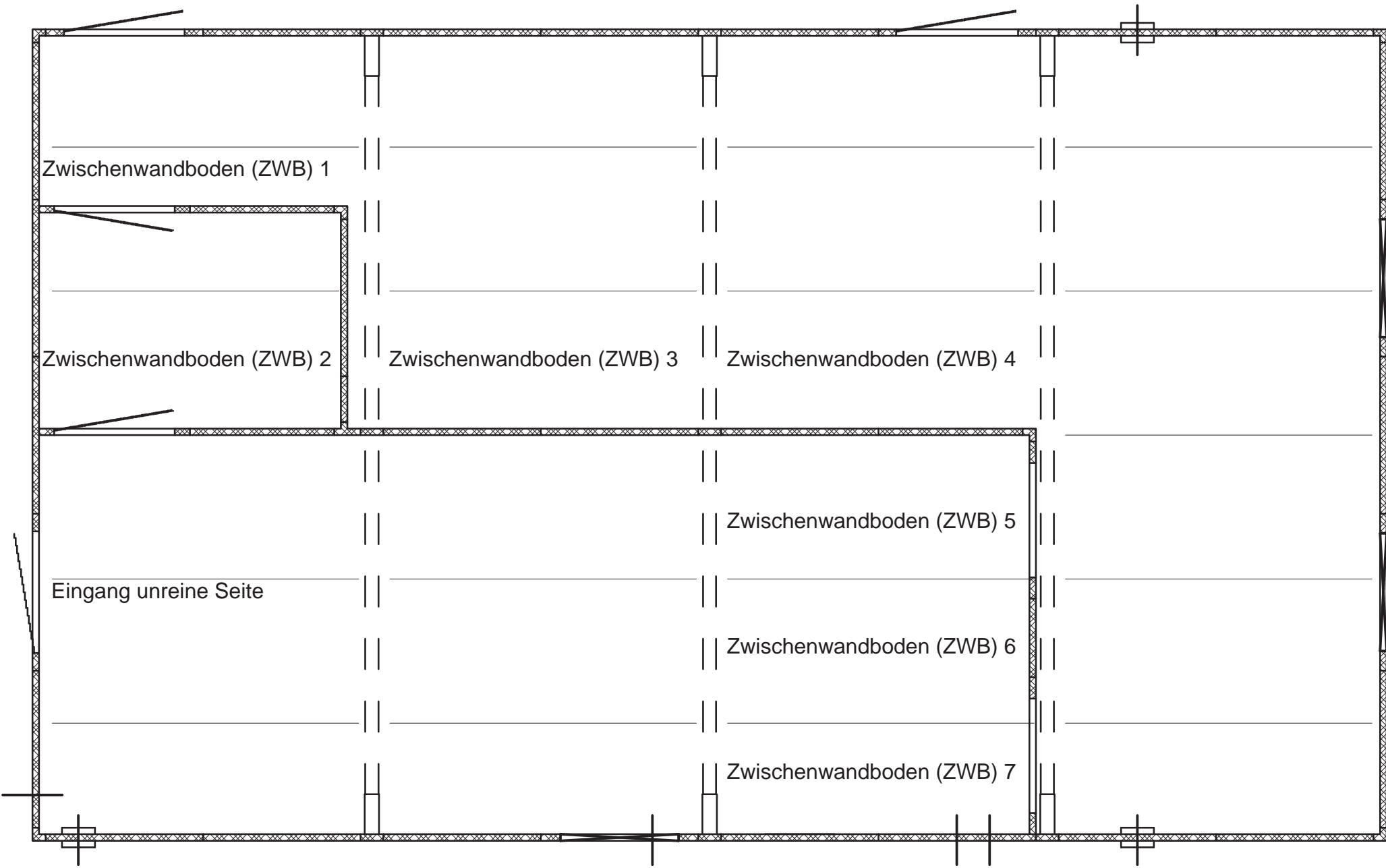


Anlage 1: Baugruppe Untergestell Gesamtübersicht

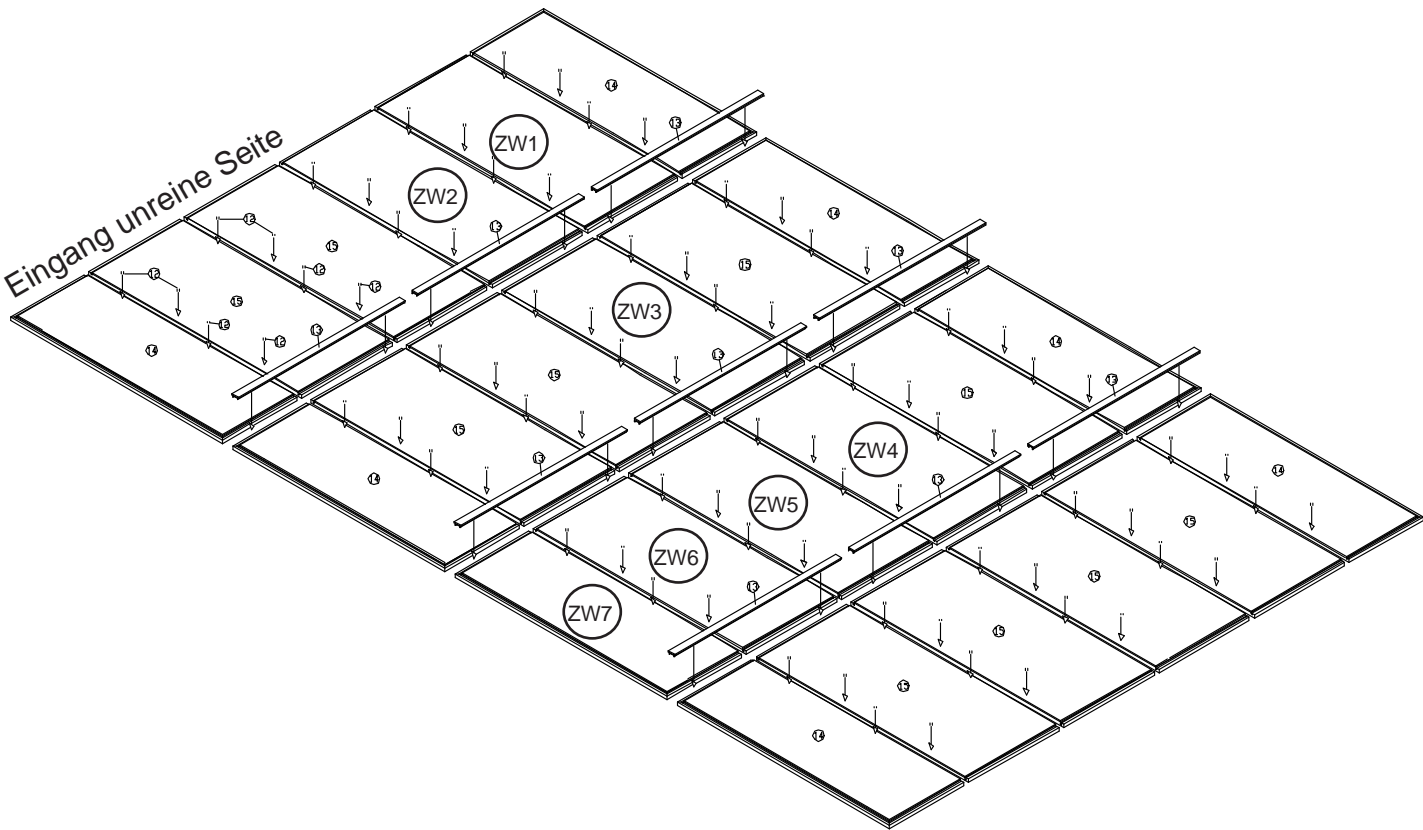


Anlage 2:

Baugruppe Boden Gesamtübersicht

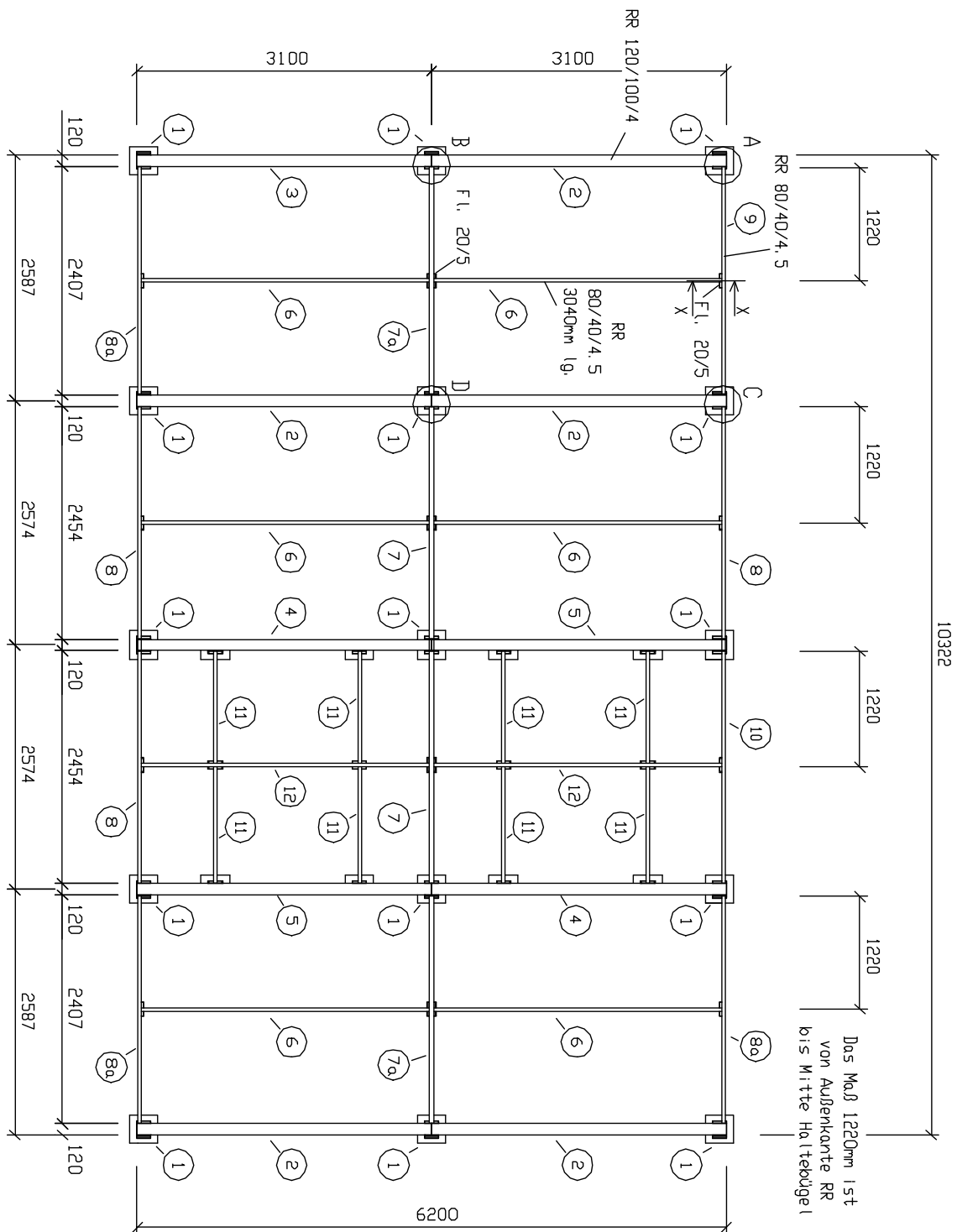


Bodenplatten CRM



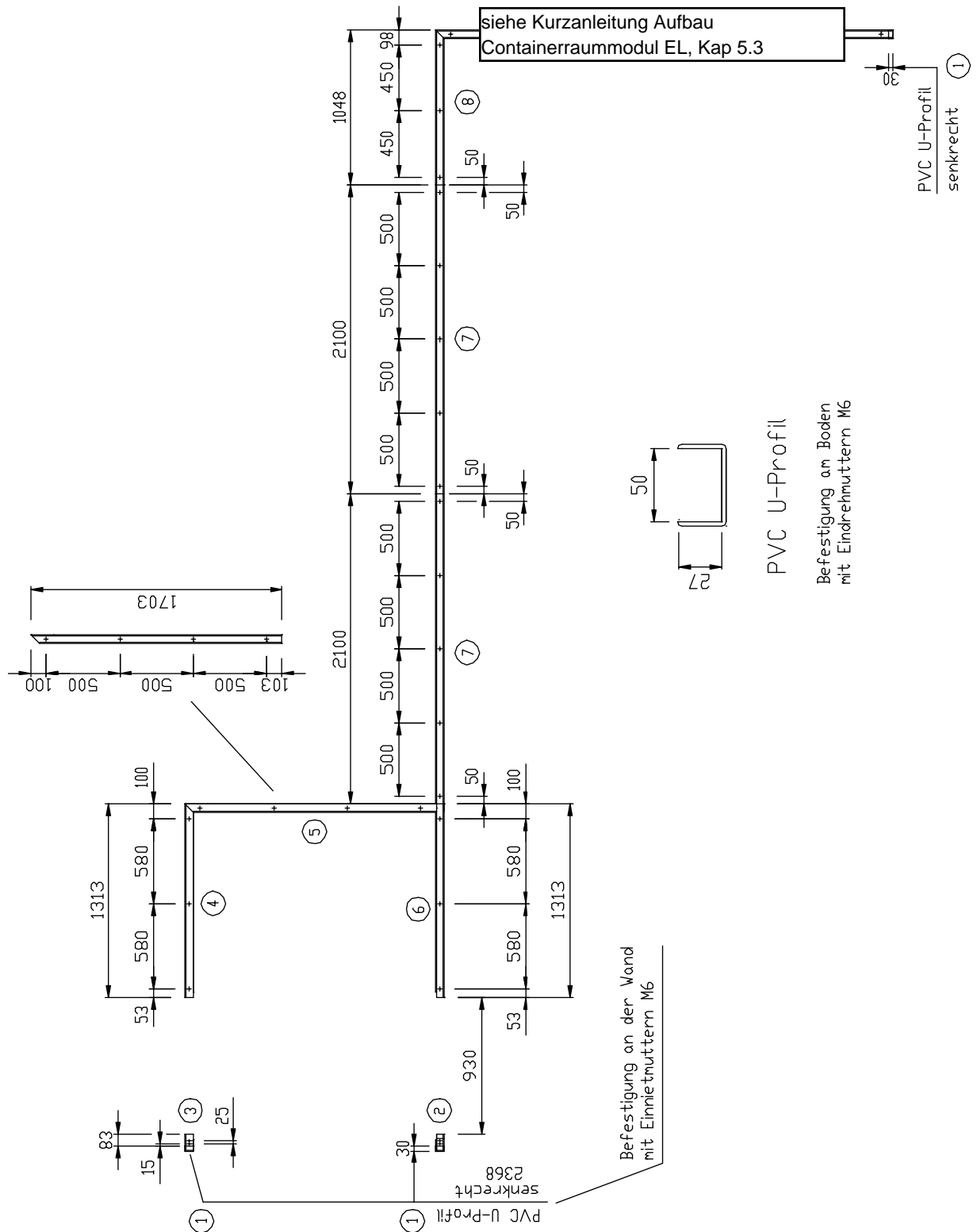
Anlage 6b:

Unterbau (Positionsnummern)



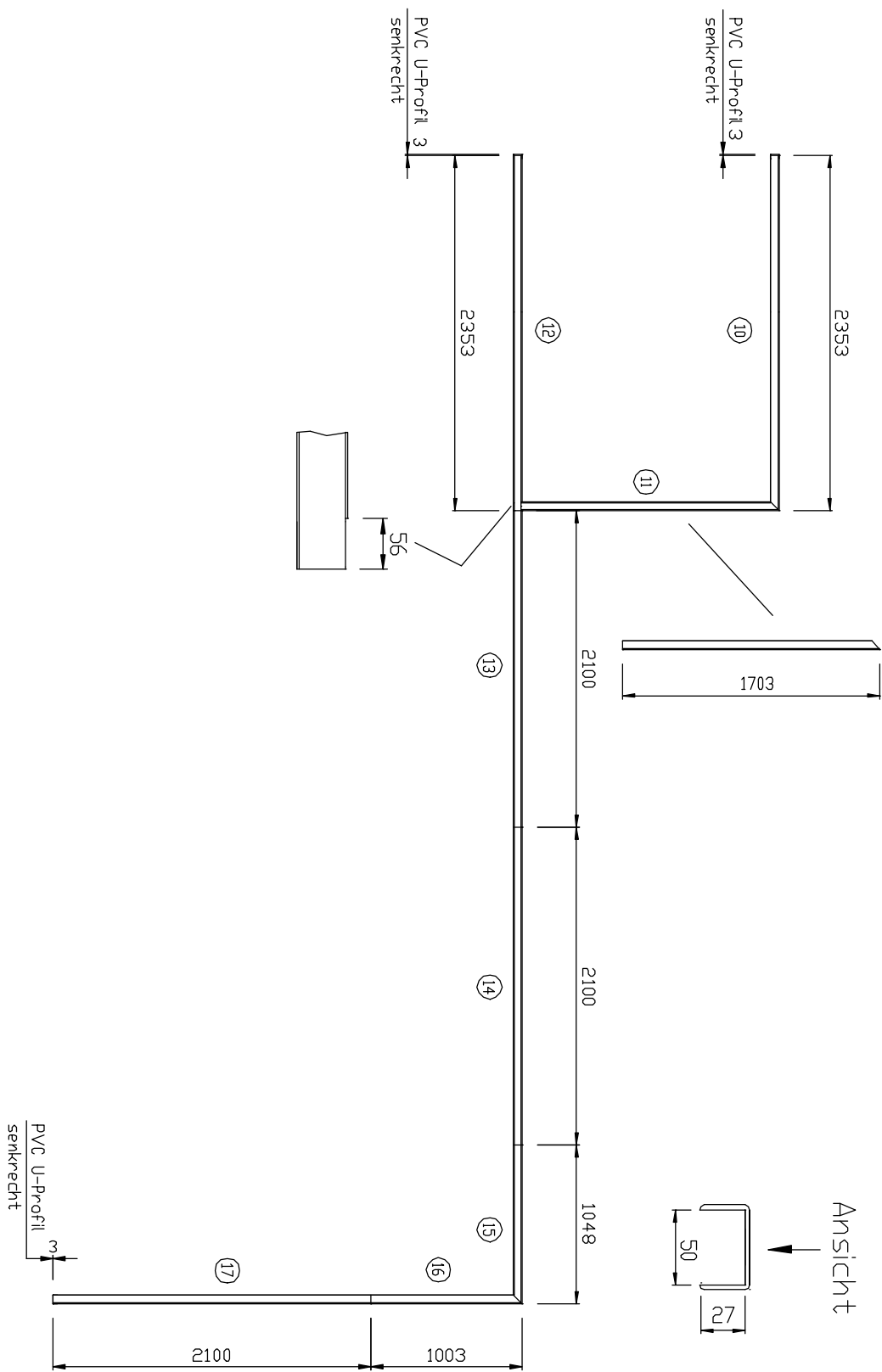
Anlage 8c:

PVC-Profil Boden



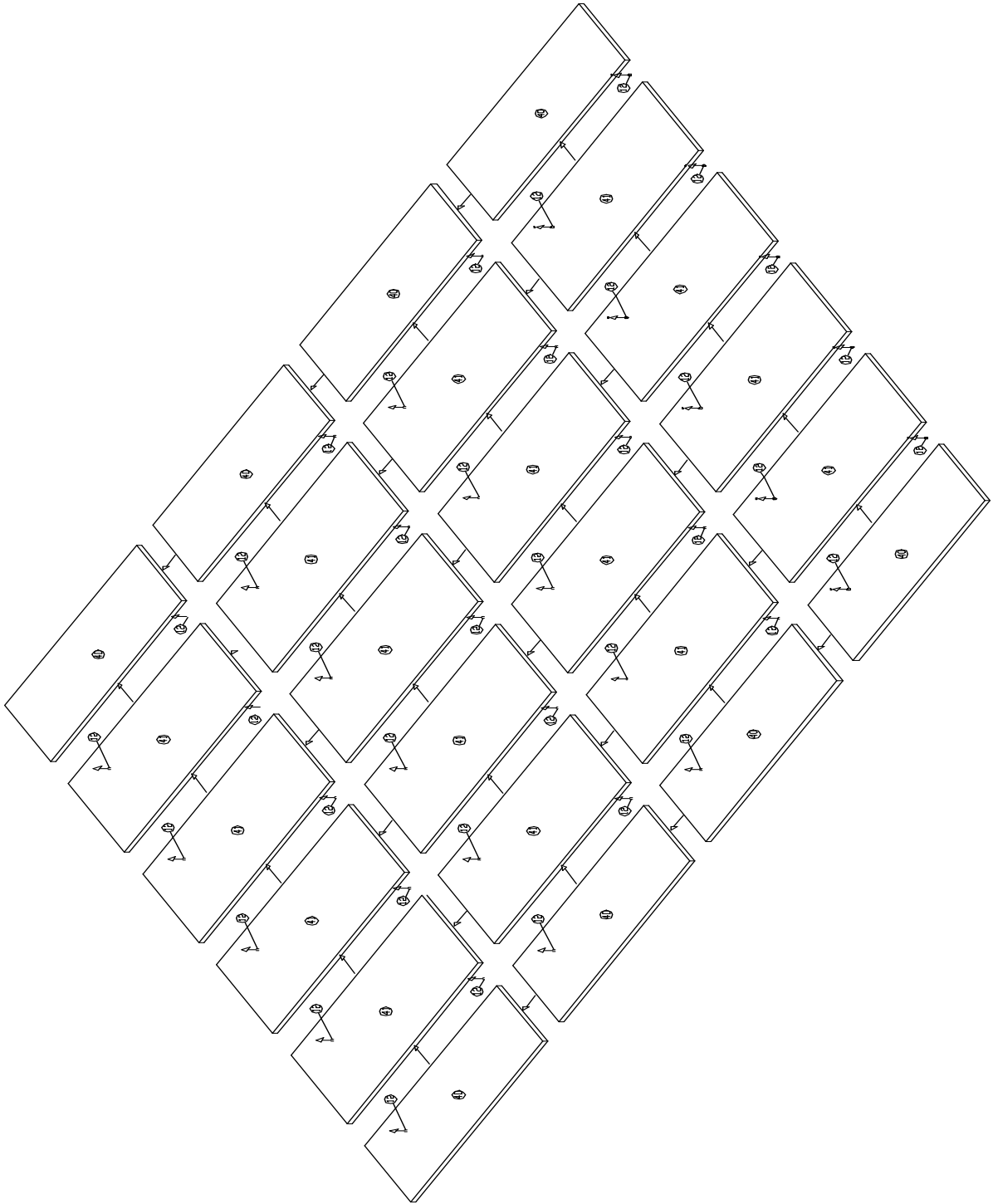
Anlage 8d:

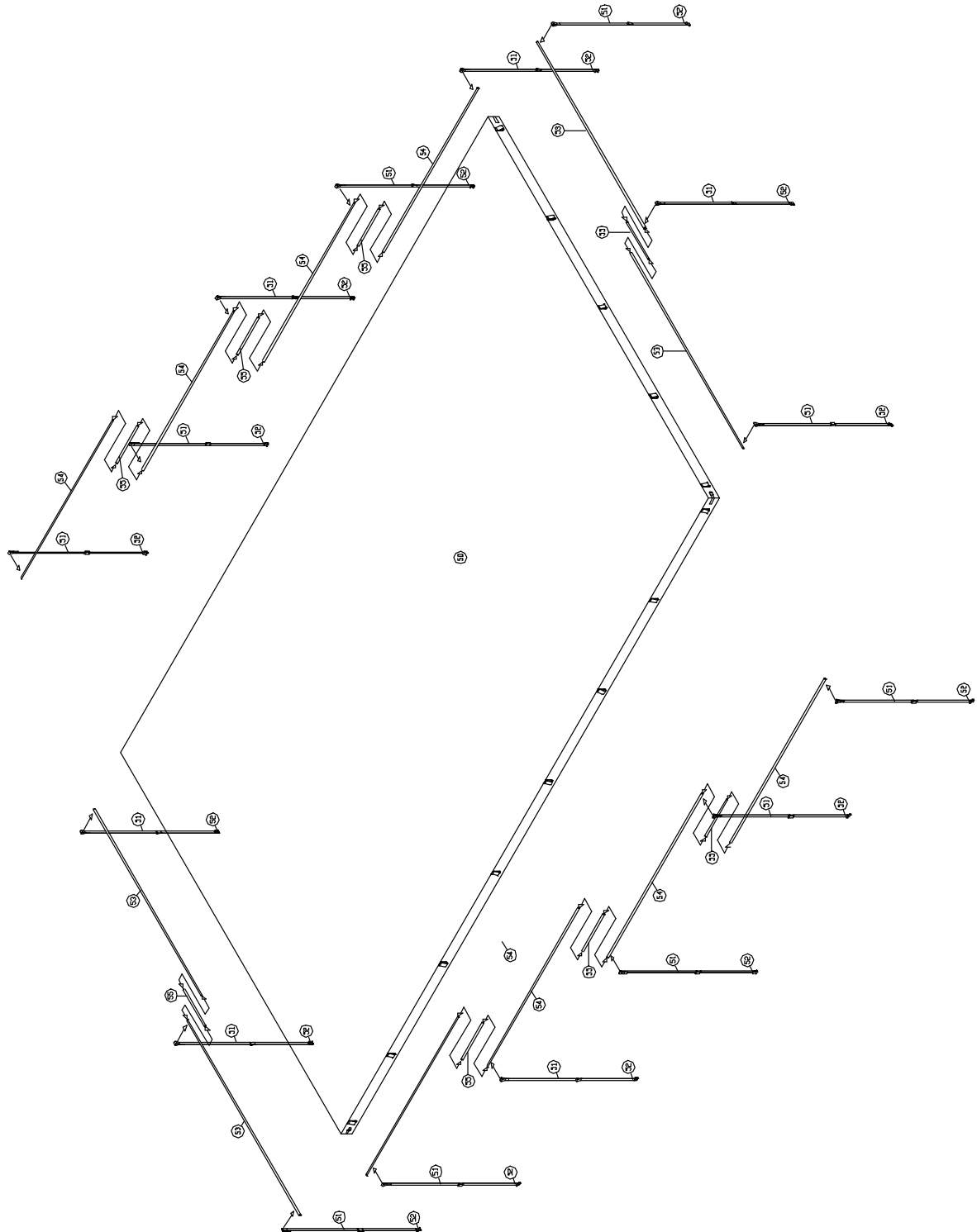
PVC-Profil Dach



Anlage 9:

Dachelemente



Anlage 10:**Dachplane**

Anlage 15:

Einzelteilliste Schleusensatz

siehe Container Transport Zubehör Inhaltsliste, Seite 23 ff.